

# SEWING DAY CAMP

**TUESDAY,  
JULY 22, 2025  
9 AM-3 PM**



**JOIN US TO CREATE YOUR OWN QUILT!**

- YOUTH MUST BE EXPERIENCED IN SEWING.
- BRING YOUR SEWING MACHINE WITH YOU. (IF YOU DON'T HAVE A MACHINE, YOU MAY BORROW ONE OF OURS.)
- DON'T FORGET TO PACK A SACK LUNCH!

**MUHLENBERG COUNTY  
COOPERATIVE EXTENSION**

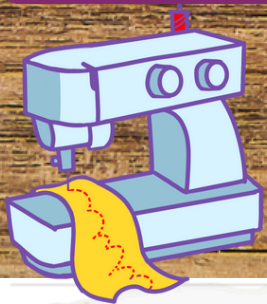
3690 State Route 1380 Central City, KY



**QUILT/AS YOU GO QUILT**

Sign up is easy! Give us a call  
**270-338-3124**

**FOR  
YOUTH  
AGES 9+**



**Cooperative  
Extension Service**

Agriculture and Natural Resources  
Family and Consumer Sciences  
4-H Youth Development  
Community and Economic Development

**MARTIN-GATTON COLLEGE OF AGRICULTURE, FOOD AND ENVIRONMENT**

Educational programs of Kentucky Cooperative Extension serve all people regardless of economic or social status and will not discriminate on the basis of race, color, ethnic origin, national origin, creed, religion, political belief, sex, sexual orientation, gender identity, gender expression, pregnancy, marital status, genetic information, age, veteran status, physical or mental disability or reprisal or retaliation for prior civil rights activity. Reasonable accommodation of disability may be available with prior notice. Program information may be made available in languages other than English. University of Kentucky, Kentucky State University, U.S. Department of Agriculture, and Kentucky Counties, Cooperating. Lexington, KY 40506



Disabilities  
accommodated  
with prior notification.